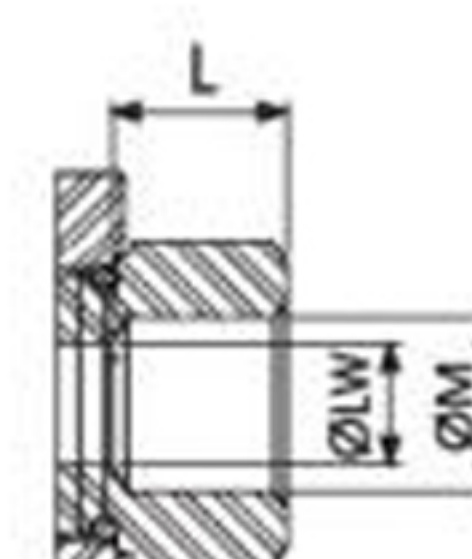
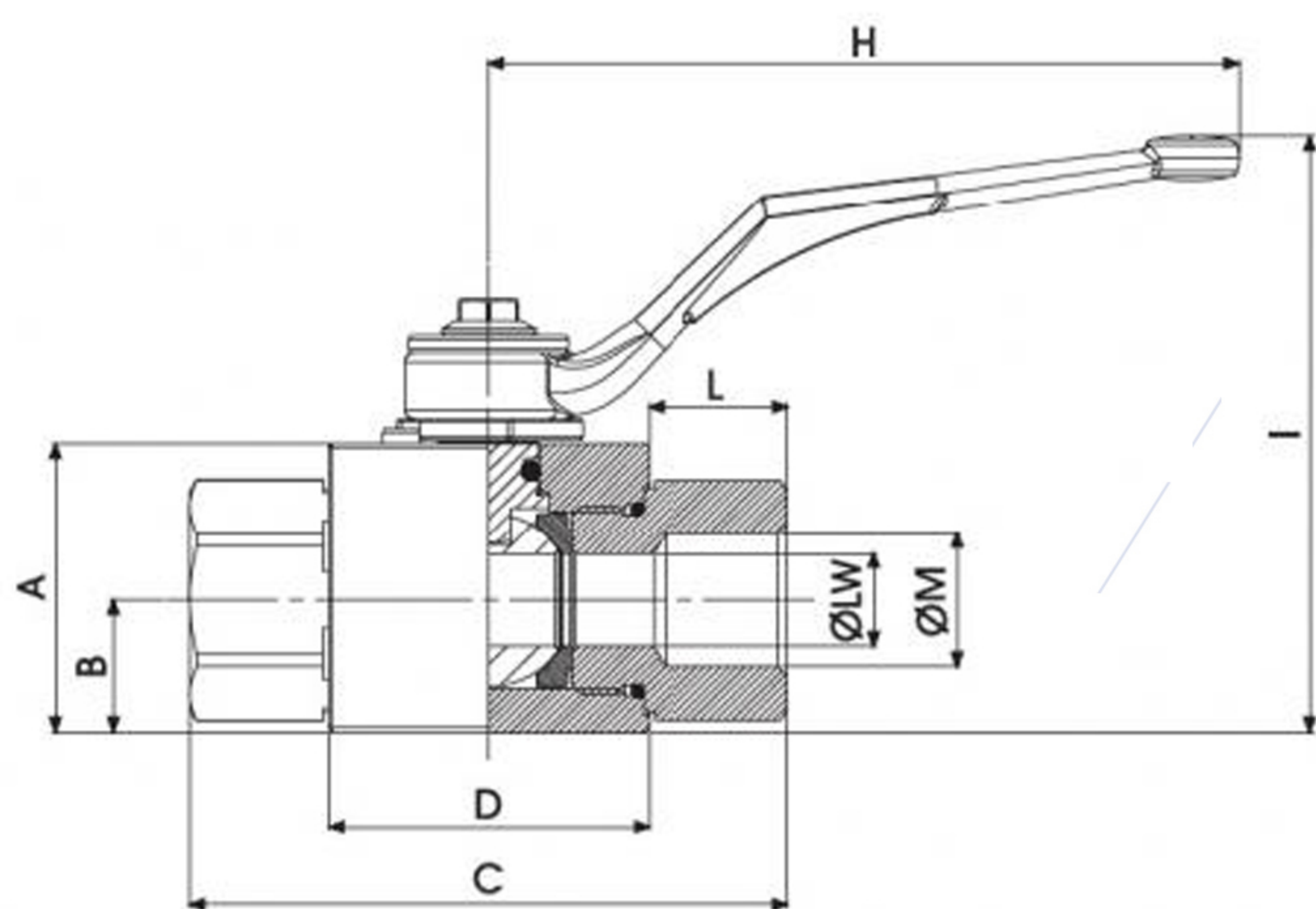
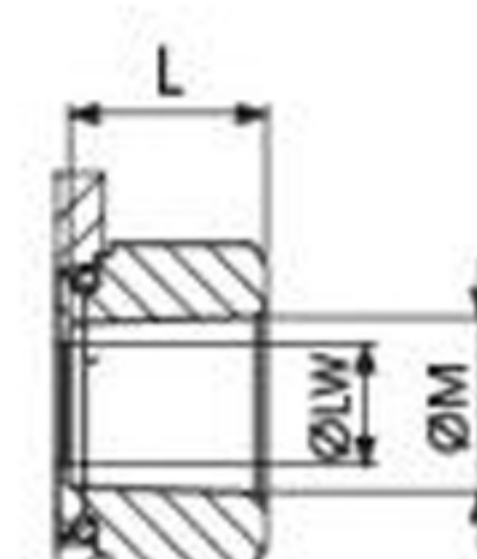


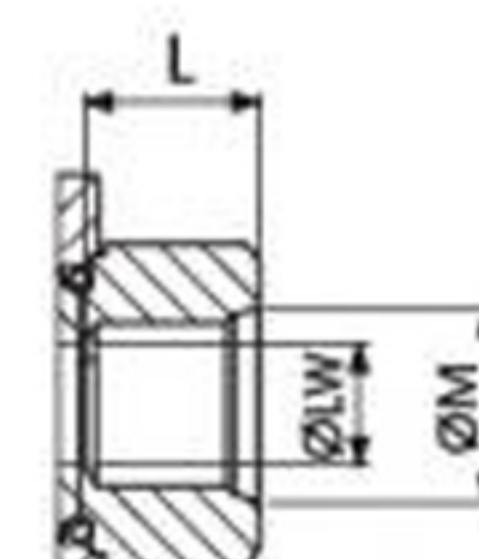
GE1



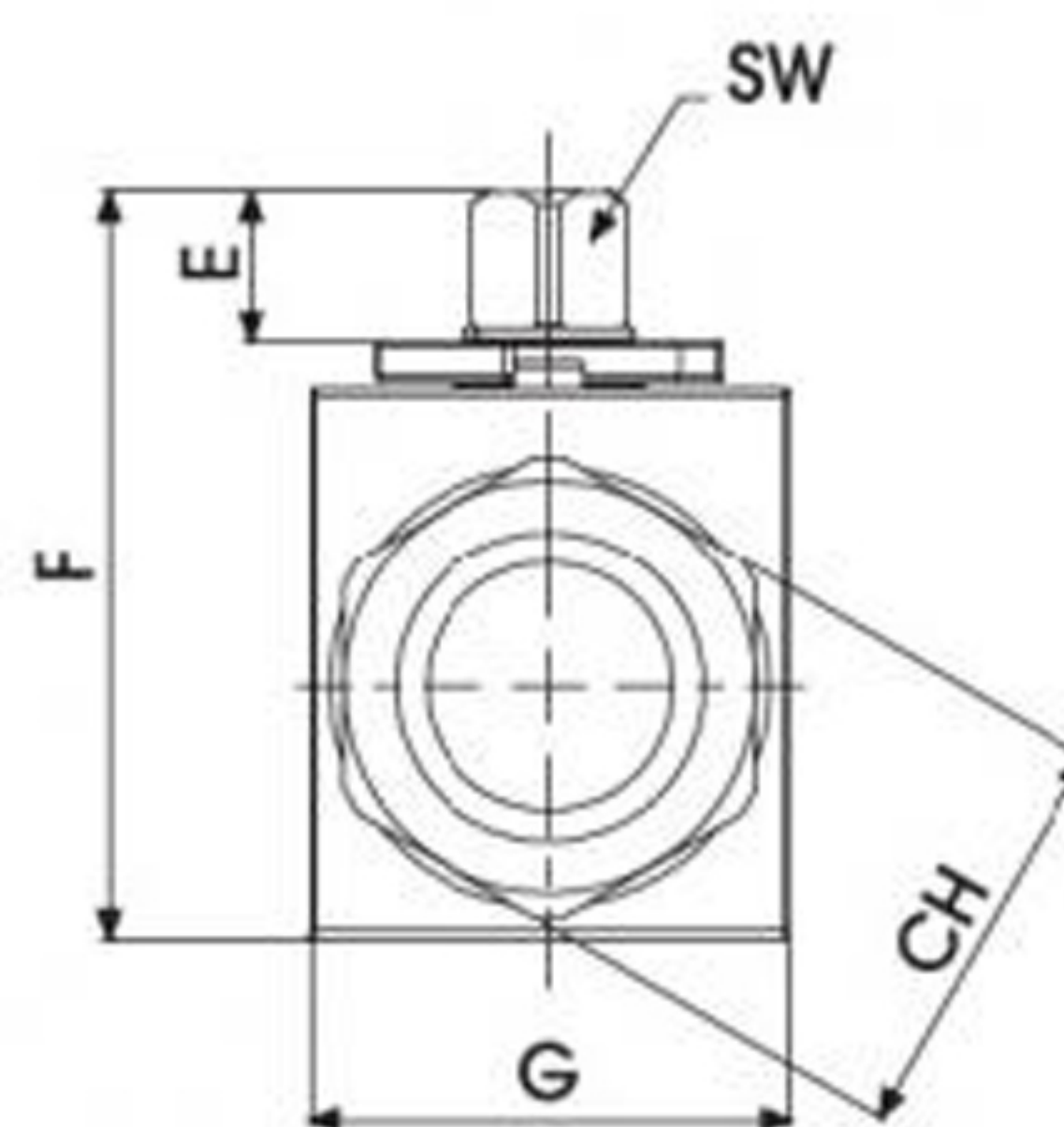
DIN ISO 228



ANSI/ASME B1.20.1



SAE J1926-1



**SMALLER
DESIGN**

SMALLER
DESIGN

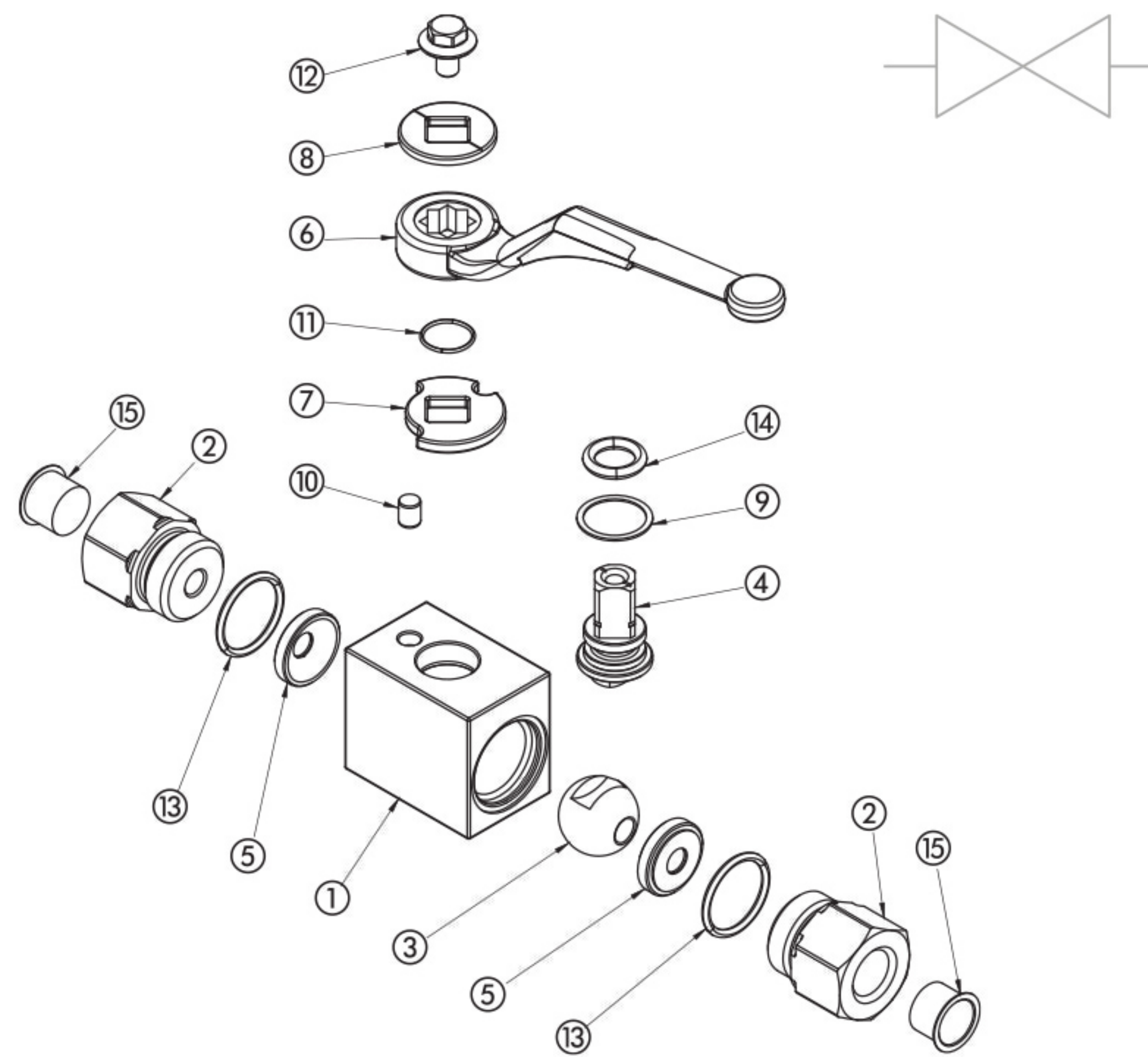
GE1

2-WAY HIGH PRESSURE BALL VALVES

CARBON STEEL

- Type: ball valve GE 2 way
- Body: block
- Ball seats: from DN6 up to DN13
- Operating pressure: 500 Bar
depending on valve size and seal materials selected
- Temp range: -20°C to +100°C
depending on seal material selected



SMALLER
DESIGN

CARBON STEEL				CARBON STEEL											
				GE1	G ¼	DN10	1	1	1	1	A	B			
				TYPE AND WAY OF VALVE	GAS DIN/ ISO 228 BSP	NPT ANSI/ ASME B1.20.1	SAE J1926-1	NOMINAL DIMENSION	BODY MATERIAL	ADAPTER MATERIAL	STEM MATERIAL	BALL MATERIAL	BALL SEAT MATERIAL	ADAPTER AND STEM SEAL MATERIAL	
1	Body	1,0737	1	GE2 2-way	G ¼	N ¼	SAE4	DN6 DN10 DN13	1 1,0737	1 1,0737	1 1,0737	1 1,0737	A POM	B NBR	
2	Adapter	1,0737	2									4 1,4404*	4 1,4404*		
3	Ball	1,0737	1												
4	Stem	1,0737	1												
5	Ball seat	POM	2												
6	Handle	ZINC	1												
7	Washer	1,0116	1												
8	Washer	1,0116	1												
9	Stem ring	POM	1												
10	Spine	1,0737	1												
11	Seeger	1,4301	1												
12	Adapter o-ring	NBR	2												
13	Stem o-ring	NBR	1												
14	Screw	Din 6921 8.8	1												
15	Caps	PVC	2												

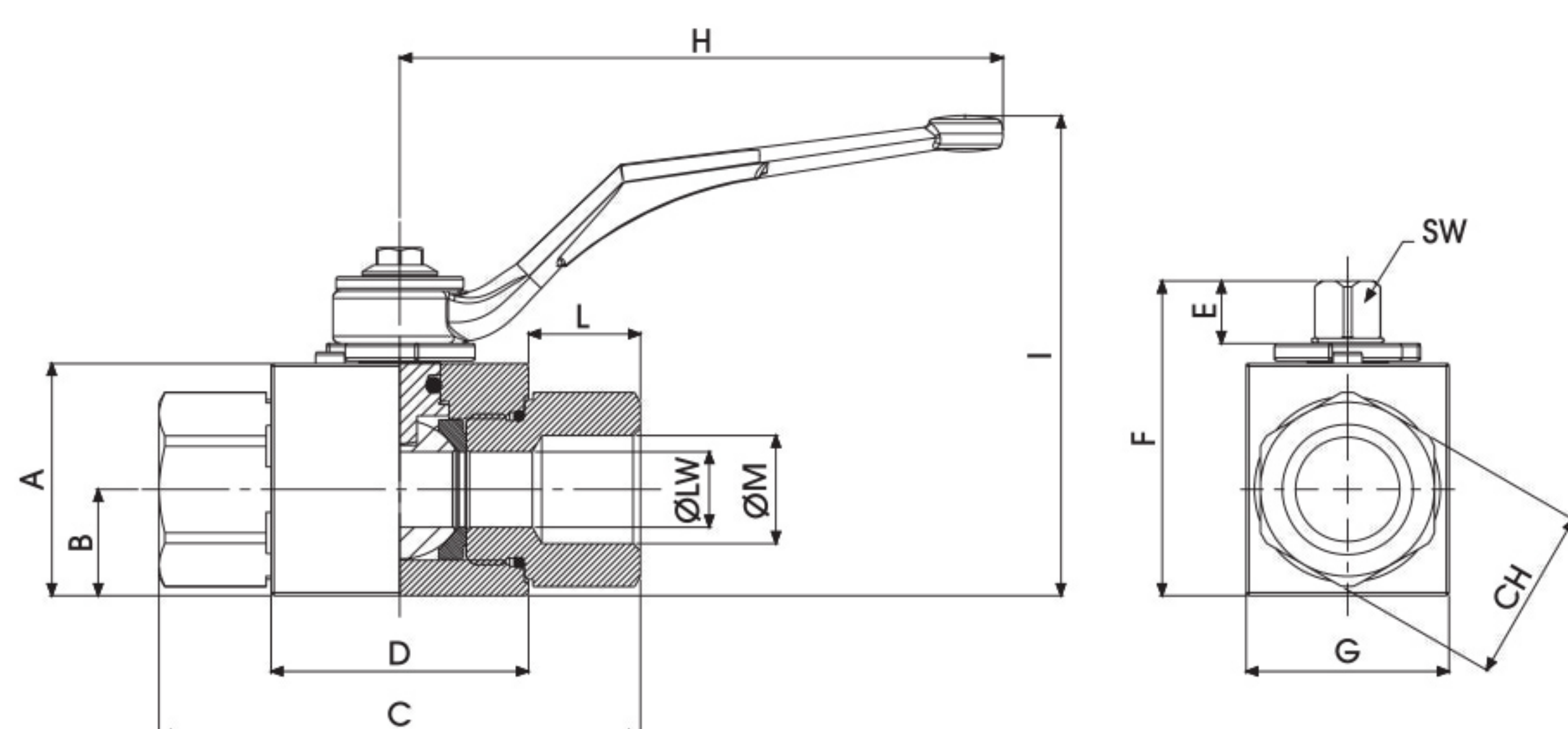
*On request:

- Reduced bore
- Special threads

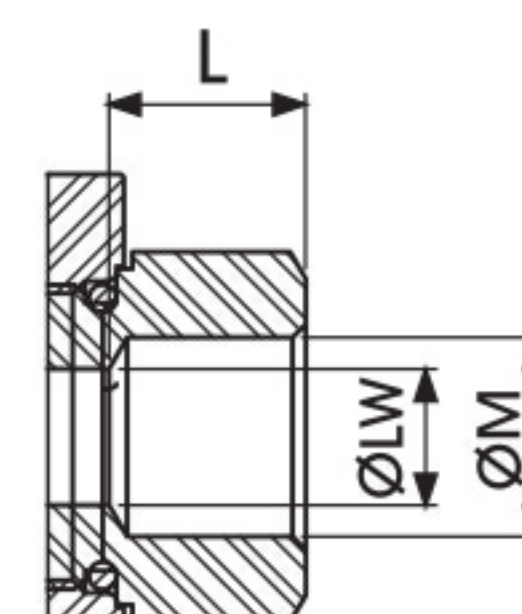
- Pressure class up to PN50 MPa
- Pneumatic and electrical actuator

- Security block
- Locking device

For further special requests please consult our technical/commercial service



**SMALLER
DESIGN**



GE1 DIN/ISO 228 BSP

Standard

TYPE	PN	DN	A	B	C	D	E	F	G	H	I	L	ØM	CH	SW	ØLW	KG	CARBON STEEL	ITEM CODE
GE1 G 1/4	50 MPa	6	33	14,3	69	39,4	11,1	47,25	26	110	87	14,8	G 1/4	22	9	6	0,378		GE1GGT15011A000
GE1 G 3/8	50 MPa	10	35	15	71	41,8	11,1	49,25	30	110	89	14,6	G 3/8	27	9	10	0,467		GE1GGT25011A000
GE1 G 1/2	50 MPa	13	40	18,3	83	44,4	11,1	54,25	35	110	94	19,3	G 1/2	30	9	13	0,635		GE1GGT35011A000

GE1 ANSI/ASME B1.20.1 NPT

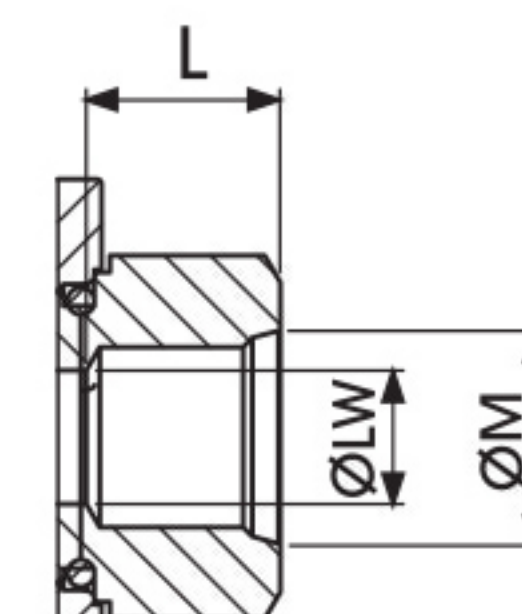
Standard

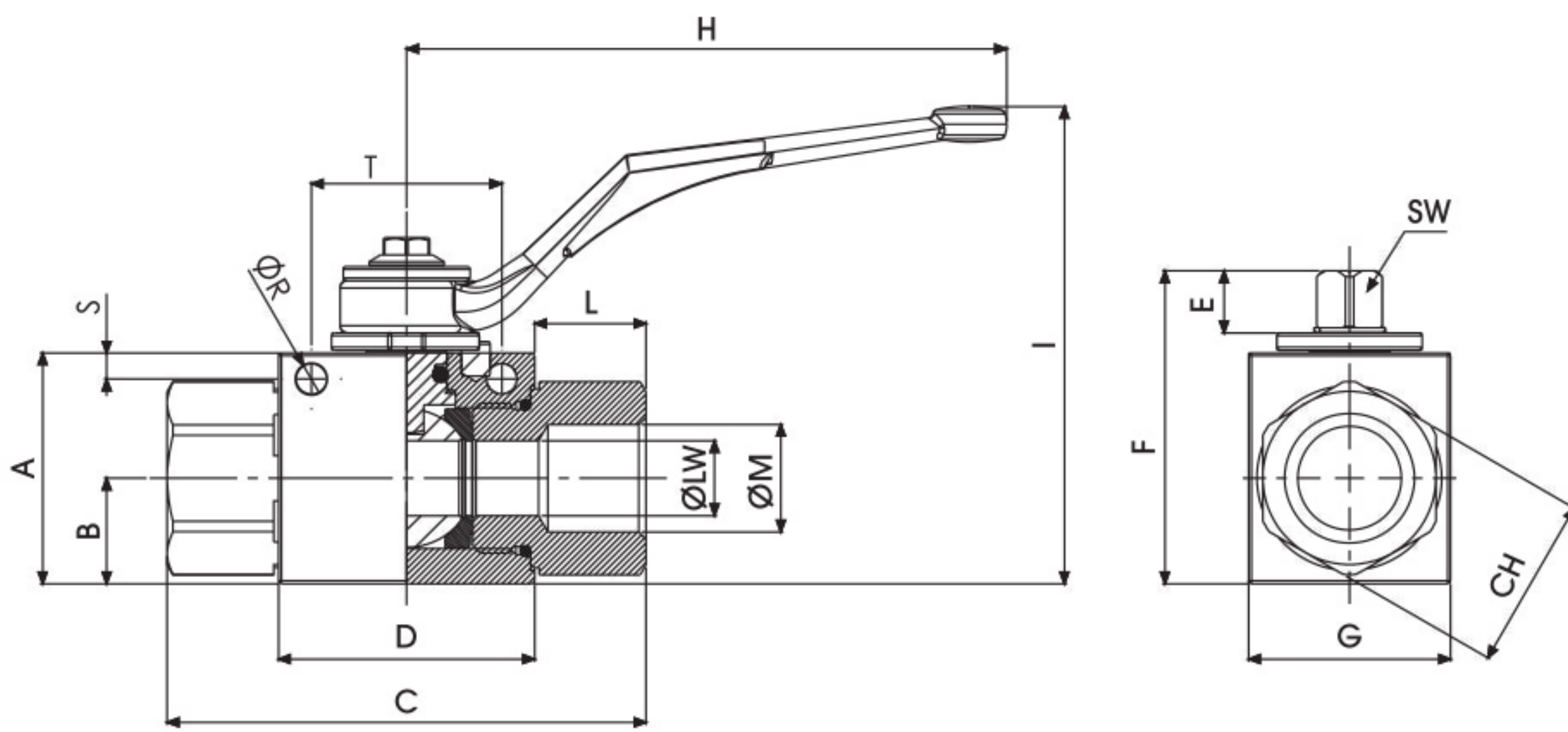
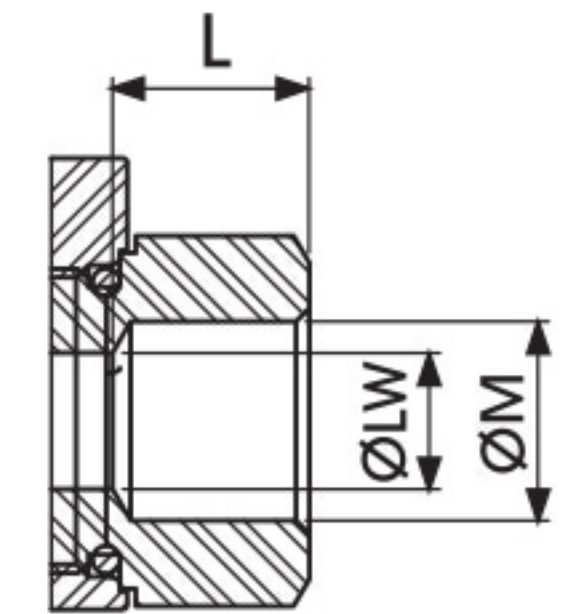
TYPE	PN	DN	A	B	C	D	E	F	G	H	I	L	ØM	CH	SW	ØLW	KG	CARBON STEEL	ITEM CODE
GE1 N 1/4	50 MPa	6	33	14,3	69	39,4	11,1	47,25	26	110	87	14,8	N 1/4	22	9	6	0,378		GE1NNT15011A000
GE1 N 3/8	50 MPa	10	35	15	71	41,8	11,1	49,25	30	110	89	14,6	N 3/8	27	9	10	0,467		GE1NNT25011A000
GE1 N 1/2	50 MPa	13	40	18,3	83	44,4	11,1	54,25	35	110	94	19,3	N 1/2	30	9	13	0,635		GE1NNT35011A000

GE1 SAE J1926-1

Standard

TYPE	PN	DN	A	B	C	D	E	F	G	H	I	L	ØM	CH	SW	ØLW	KG	CARBON STEEL	ITEM CODE
GE1 SAE4	50 MPa	6	33	14,3	69	39,4	11,1	47,25	26	110	87	14,8	7/16 UNF	22	9	6	0,378		GE1EEE05011A000
GE1 SAE6	50 MPa	10	35	15	71	41,8	11,1	49,25	30	110	89	14,6	9/16 UNF	27	9	10	0,467		GE1EEE15011A000
GE1 SAE8	50 MPa	13	40	18,3	83	44,4	11,1	54,25	35	110	94	19,3	3/4 UNF	30	9	13	0,635		GE1EEE25011A000



SMALLER
DESIGN

GE1 DIN/ISO 228 BSP

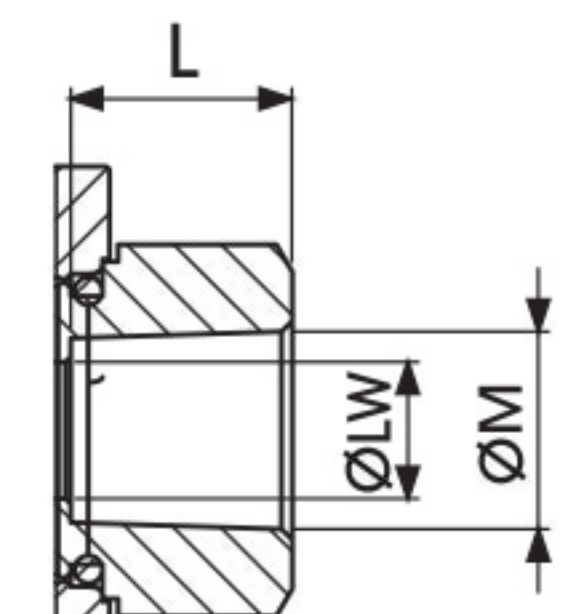
Fixing holes

TYPE	PN	DN	A	B	C	D	E	F	G	H	I	L	ØM	CH	ØR	S	T	SW	ØLW	KG	CARBON STEEL	ITEM CODE
GE1 G 1/4	50 MPa	6	33	14,3	69	39,4	11,1	47,25	26	110	87	14,8	G 1/4	22	5,10	4,5	33	9	6	0,378		GE1GGT15011AF10
GE1 G 3/8	50 MPa	10	35	15	71	41,8	11,1	49,25	30	110	89	14,6	G 3/8	27	5,25	4,5	33	9	10	0,467		GE1GGT25011AF10
GE1 G 1/2	50 MPa	13	40	18,3	83	44,4	11,1	54,25	35	110	94	19,3	G 1/2	30	5,25	4,5	33	9	13	0,635		GE1GGT35011AF10

GE1 ANSI/ASME B1.20.1 NPT

Fixing holes

TYPE	PN	DN	A	B	C	D	E	F	G	H	I	L	ØM	CH	ØR	S	T	SW	ØLW	KG	CARBON STEEL	ITEM CODE
GE1 N 1/4	50 MPa	6	33	14,3	69	39,4	11,1	47,25	26	110	87	14,8	N 1/4	22	5,10	4,5	33	9	6	0,378		GE1NNT15011AF10
GE1 N 3/8	50 MPa	10	35	15	71	41,8	11,1	49,25	30	110	89	14,6	N 3/8	27	5,25	4,5	33	9	10	0,467		GE1NNT25011AF10
GE1 N 1/2	50 MPa	13	40	18,3	83	44,4	11,1	54,25	35	110	94	19,3	N 1/2	30	5,25	4,5	33	9	13	0,635		GE1NNT35011AF10



GE1 SAE J1926-1

Fixing holes

TYPE	PN	DN	A	B	C	D	E	F	G	H	I	L	ØM	CH	ØR	S	T	SW	ØLW	KG	CARBON STEEL	ITEM CODE
GE1 SAE4	50 MPa	6	33	14,3	69	39,4	11,1	47,25	26	110	87	14,8	7/16 UNF	22	5,10	4,5	33	9	6	0,378		GE1EEE05011AF10
GE1 SAE6	50 MPa	10	35	15	71	41,8	11,1	49,25	30	110	89	14,6	9/16 UNF	27	5,25	4,5	33	9	10	0,467		GE1EEE15011AF10
GE1 SAE8	50 MPa	13	40	18,3	83	44,4	11,1	54,25	35	110	94	19,3	3/4 UNF	30	5,25	4,5	33	9	13	0,635		GE1EEE25011AF10

