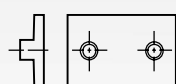
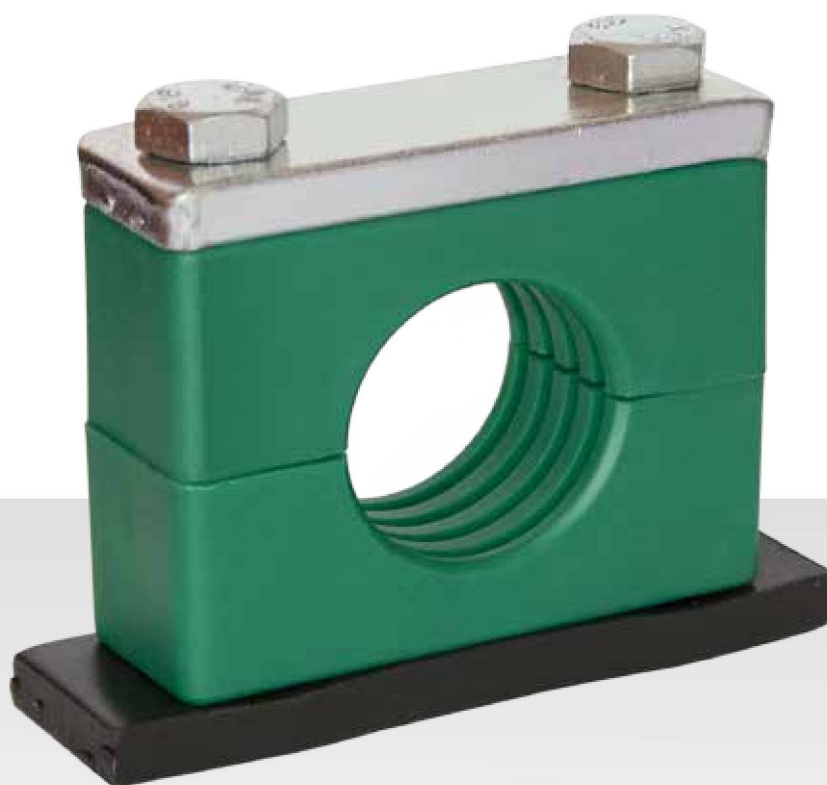
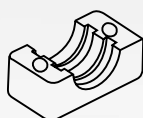


Collari completi serie pesante

Complete clamps heavy duty series



APINP
1



AMP.P....S
2x



APSP
1



AVTEP
2x

AMP.P = polipropilene
polypropylene

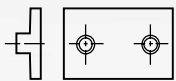
MMP.P = polyamide
self-extinguishing

RMP.P = gomma
rubber

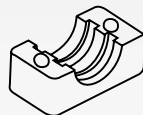
AMLL.P = alluminio
aluminium

Collari completo serie pesante raggruppato

Complete stacking clamps heavy duty series



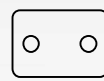
APINP
1



AMP.P.....S
4x



APMRSP
1x



APSP
1x



AVTEP
2x



AVTEAP
2x

AMP.P = polipropilene
polypropylene

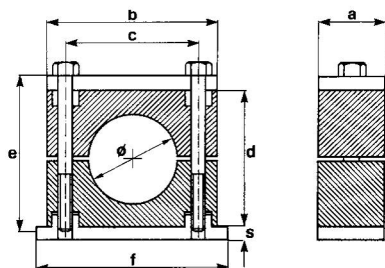
MMP.P = polyamide
self-extinguishing

RMP.P = gomma
rubber

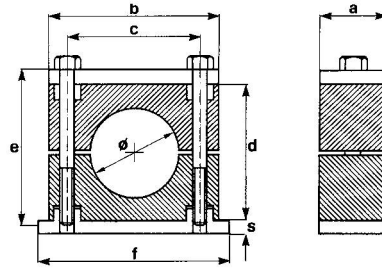
AMLL.P = alluminio
aluminium

Collari serie pesante in polipropilene,
poliammide autoestinguente, alluminio o gomma

*Heavy duty clamps in polypropylene,
self-extinguishing polyamide, aluminium or rubber*



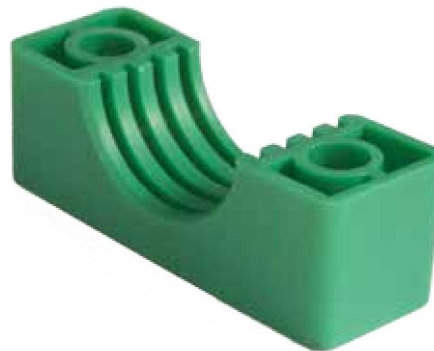
DIN gruppo group	diametro tubo pipe diameter		tipo di collare clamp type				dimensioni in mm dimension in mm						
	\varnothing mm	pollici / inches G \varnothing O.D.	AMP.P polipropilene polypropylene	MMP.P polyamide self-extinguishing	RMP.P gomma rubber	AMLL.P alluminio aluminium	a	b	c	d	f	s	e
1	6		AMP.P1 06	MMP.P1 06	RMP.P1 06	AMLL.P1 06	30	55	33	32	73	8	M10x45
	6,4	1/4"	AMP.P1 6,4	MMP.P1 6,4	RMP.P1 6,4	AMLL.P1 6,4							
	8	5/16"	AMP.P1 08	MMP.P1 08	RMP.P1 08	AMLL.P1 08							
	9,5	3/8"	AMP.P1 9,5	MMP.P1 9,5	RMP.P1 9,5	AMLL.P1 9,5							
	10	1/8"	AMP.P1 10	MMP.P1 10	RMP.P1 10	AMLL.P1 10							
	12		AMP.P1 12	MMP.P1 12	RMP.P1 12	AMLL.P1 12							
	12,7	1/2"	AMP.P1 12,7	MMP.P1 12,7	RMP.P1 12,7	AMLL.P1 12,7							
	13,5	1/4"	AMP.P1 1/4"	MMP.P1 1/4"	RMP.P1 1/4"	AMLL.P1 1/4"							
	14		AMP.P1 14	MMP.P1 14	RMP.P1 14	AMLL.P1 14							
	15		AMP.P1 15	MMP.P1 15	RMP.P1 15	AMLL.P1 15							
	16	5/8"	AMP.P1 16	MMP.P1 16	RMP.P1 16	AMLL.P1 16							
2	17,2	3/8"	AMP.P1 3/8"	MMP.P1 3/8"	RMP.P1 3/8"	AMLL.P1 3/8"	30	70	45	48	102	8	M10x60
	18		AMP.P1 18	MMP.P1 18	RMP.P1 18	AMLL.P1 18							
	19	3/4"	AMP.P2 19	MMP.P2 19	RMP.P2 19	AMLL.P2 19							
	20		AMP.P2 20	MMP.P2 20	RMP.P2 20	AMLL.P2 20							
	21,3	1/2"	AMP.P2 1/2"	MMP.P2 1/2"	RMP.P2 1/2"	AMLL.P2 1/2"							
	22	7/8"	AMP.P2 22	MMP.P2 22	RMP.P2 22	AMLL.P2 22							
	25		AMP.P2 25	MMP.P2 25	RMP.P2 25	AMLL.P2 25							
	25,4	1"	AMP.P2 25,4	MMP.P2 25,4	RMP.P2 25,4	AMLL.P2 25,4							
	26,9	3/4"	AMP.P2 3/4"	MMP.P2 3/4"	RMP.P2 3/4"	AMLL.P2 3/4"							
	28		AMP.P2 28	MMP.P2 28	RMP.P2 28	AMLL.P2 28							
30		AMP.P2 30	MMP.P2 30	RMP.P2 30	AMLL.P2 30								
3	30		AMP.P3 30	MMP.P3 30	RMP.P3 30	AMLL.P3 30	30	85	60	60	140	8	M10x70
	32	1 1/4"	AMP.P3 32	MMP.P3 32	RMP.P3 32	AMLL.P3 32							
	33,7	1"	AMP.P3 1"	MMP.P3 1"	RMP.P3 1"	AMLL.P3 1"							
	35		AMP.P3 35	MMP.P3 35	RMP.P3 35	AMLL.P3 35							
	38	1 1/2"	AMP.P3 38	MMP.P3 38	RMP.P3 38	AMLL.P3 38							
	40		AMP.P3 40	MMP.P3 40	RMP.P3 40	AMLL.P3 40							
42	1 1/4"	AMP.P3 11/4"	MMP.P3 11/4"	RMP.P3 11/4"	AMLL.P3 11/4"								



DIN gruppo group	diametro tubo pipe diameter			tipo di collare clamp type				dimensioni in mm dimension in mm						
	Ø mm	pollici / inches G	Ø O.D.	AMP.P polipropilene polypropylene	MMP.P polyamide self-extinguishing	RMP.P gomma rubber	AMLL.P alluminio aluminium	a	b	c	d	f	s	e
4	38		1 1/2"	AMP.P4 38	MMP.P4 38	RMP.P4 38	AMLL.P4 38	45	115	90	90	140	10	M12X100
	42	1 1/4"		AMP.P4 1 1/4"	MMP.P4 1 1/4"	RMP.P4 1 1/4"	AMLL.P4 1 1/4"							
	44,5		1 3/4"	AMP.P4 44,5	MMP.P4 44,5	RMP.P4 44,5	AMLL.P4 44,5							
	48,3	1 1/2"		AMP.P4 1 1/2"	MMP.P4 1 1/2"	RMP.P4 1 1/2"	AMLL.P4 1 1/2"							
	50			AMP.P4 50	MMP.P4 50	RMP.P4 50	AMLL.P4 50							
	50,8		2"	AMP.P4 50,8	MMP.P4 50,8	RMP.P4 50,8	AMLL.P4 50,8							
	55			AMP.P4 55	MMP.P4 55	RMP.P4 55	AMLL.P4 55							
	57		2 1/4"	AMP.P4 57	MMP.P4 57	RMP.P4 57	AMLL.P4 57							
	60,3	2"		AMP.P4 2"	MMP.P4 2"	RMP.P4 2"	AMLL.P4 2"							
	63,5		2 1/2"	AMP.P4 63,5	MMP.P4 63,5	RMP.P4 63,5	AMLL.P4 63,5							
	65			AMP.P4 65	MMP.P4 65	RMP.P4 65	AMLL.P4 65							
	70		2 3/4"	AMP.P4 70	MMP.P4 70	RMP.P4 70	AMLL.P4 70							
5	65			AMP.P5 65	MMP.P5 65	RMP.P5 65	AMLL.P5 65	60	152	122	120	180	10	M16X130
	70		2 3/4"	AMP.P5 70	MMP.P5 70	RMP.P5 70	AMLL.P5 70							
	73			AMP.P5 73	MMP.P5 73	RMP.P5 73	-							
	75			AMP.P5 75	MMP.P5 75	RMP.P5 75	AMLL.P5 75							
	76,1	2 1/2"	3"	AMP.P5 2 1/2"	MMP.P5 2 1/2"	RMP.P5 2 1/2"	AMLL.P5 2 1/2"							
	80			AMP.P5 80	MMP.P5 80	RMP.P5 80	AMLL.P5 80							
	82,5		3 1/4"	AMP.P5 82,5	MMP.P5 82,5	RMP.P5 82,5	AMLL.P5 82,5							
	88,9	3"	3 1/2"	AMP.P5 3"	MMP.P5 3"	RMP.P5 3"	AMLL.P5 3"							
6	88,9	3"	3 1/2"	AMP.P6 3"	MMP.P6 3"	RMP.P6 3"	-	80	205	168	170	225	15	M20X190
	100			AMP.P6 100	MMP.P6 100	RMP.P6 100	-							
	101,6	3 1/2"	4"	AMP.P6 3 1/2"	MMP.P6 3 1/2"	RMP.P6 3 1/2"	-							
	108		4 1/4"	AMP.P6 108	MMP.P6 108	RMP.P6 108	-							
	114,3	4"	4 1/2"	AMP.P6 4"	MMP.P6 4"	RMP.P6 4"	-							
	127	4 1/2"	5"	AMP.P6 4 1/2"	MMP.P6 4 1/2"	RMP.P6 4 1/2"	-							
	133		5 1/2"	AMP.P6 133	MMP.P6 133	RMP.P6 133	-							
7	133		5 1/4"	AMP.P7 133	MMP.P7 133	RMP.P7 133	-	90	250	205	200	270	15	M24X220
	139,7	5"	5 1/2"	AMP.P7 5"	MMP.P7 5"	RMP.P7 5"	-							
	152,4	5 1/2"	6"	AMP.P7 5 1/2"	MMP.P7 5 1/2"	RMP.P7 5 1/2"	-							
	165		6 1/2"	AMP.P7 165	MMP.P7 165	RMP.P7 165	-							
	168,3	6"		AMP.P7 6"	MMP.P7 6"	RMP.P7 6"	-							
8	168,3	6"		AMP.P8 6"	-	-	-	120	320	265	270	340	25	M30X300
	177,8		7"	AMP.P8 177,8	-	-	-							
	193,7		7 5/8"	AMP.P8 193,7	-	-	-							
	216		8 1/2"	AMP.P8 216	-	-	-							
	219,1	8"		AMP.P8 8"	-	-	-							



tipo H interno liscio
H model smooth inside



tipo normale interno sagomato
normal model profiled inside

DIN gruppo group	semi-collare clamp-half	DIN gruppo group	semi-collare clamp-half	DIN gruppo group	semi-collare clamp-half
1	AMP.P1 06 S	4	AMP.P4 38 S	7	AMP.P7 133 S
	AMP.P1 6,4 S		AMP.P4 11/4" S		AMP.P7 5" S
	AMP.P1 08 S		AMP.P4 44,5 S		AMP.P7 5 1/2" S
	AMP.P1 9,5 S		AMP.P4 11/2" S		AMP.P7 165 S
	AMP.P1 10 S		AMP.P4 50 S		AMP.P7 6" S
	AMP.P1 12 S		AMP.P4 50,8 S		AMP.P8 6" S
	AMP.P1 12,7 S		AMP.P4 55 S		AMP.P8 177,8 S
	AMP.P1 1/4" S		AMP.P4 57 S	8	AMP.P8 193,7 S
	AMP.P1 14 S		AMP.P4 2" S		AMP.P8 216 S
	AMP.P1 15 S		AMP.P4 63,5 S		AMP.P8 8" S
	AMP.P1 16 S		AMP.P4 65 S		
	AMP.P1 3/8" S		AMP.P4 70 S		
	AMP.P1 18 S		AMP.P5 65 S		
	AMP.P2 19 S		AMP.P5 70 S	5	
AMP.P2 20 S	AMP.P5 73 S				
AMP.P2 1/2" S	AMP.P5 75 S				
AMP.P2 22 S	AMP.P5 2 1/2" S				
AMP.P2 25 S	AMP.P5 80 S				
AMP.P2 25,4 S	AMP.P5 82,5 S				
AMP.P2 3/4" S	AMP.P5 3" S				
AMP.P2 28 S	AMP.P6 3" S	6			
AMP.P2 30 S	AMP.P6 100 S				
AMP.P3 30 S	AMP.P6 3 1/2" S				
AMP.P3 32 S	AMP.P6 108 S				
AMP.P3 1" S	AMP.P6 4" S				
AMP.P3 35 S	AMP.P6 4 1/2" S				
AMP.P3 38 S	AMP.P6 133 S				
AMP.P3 40 S					
AMP.P3 1 1/4" S					



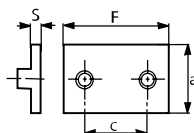
tipo H interno liscio
H model smooth inside



tipo normale interno sagomato
normal model profiled inside

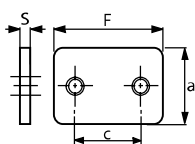
DIN gruppo group	coppia collare pair of halves	DIN gruppo group	coppia collare pair of halves	DIN gruppo group	coppia collare pair of halves
1	AMP.P1 06 C	4	AMP.P4 38 C	7	AMP.P7 133 C
	AMP.P1 6,4 C		AMP.P4 1 1/4" C		AMP.P7 5" C
	AMP.P1 08 C		AMP.P4 44,5 C		AMP.P7 5 1/2" C
	AMP.P1 9,5 C		AMP.P4 1 1/2" C		AMP.P7 165 C
	AMP.P1 10 C		AMP.P4 50 C		AMP.P7 6" C
	AMP.P1 12 C		AMP.P4 50,8 C		AMP.P8 6" C
	AMP.P1 12,7 C		AMP.P4 55 C		AMP.P8 177,8 C
	AMP.P1 1/4" C		AMP.P4 57 C	8	AMP.P8 193,7 C
	AMP.P1 14 C		AMP.P4 2" C	AMP.P8 216 C	
	AMP.P1 15 C		AMP.P4 63,5 C	AMP.P8 8" C	
	AMP.P1 16 C		AMP.P4 65 C		
	AMP.P1 3/8" C		AMP.P4 70 C		
	AMP.P1 18 C		AMP.P5 65 C		
AMP.P2 19 C	AMP.P5 70 C				
AMP.P2 20 C	AMP.P5 73 C				
AMP.P2 1/2" C	AMP.P5 75 C				
AMP.P2 22 C	5	AMP.P5 2 1/2" C			
AMP.P2 25 C	AMP.P5 80 C				
AMP.P2 25,4 C	AMP.P5 82,5 C				
AMP.P2 3/4" C	AMP.P5 3" C				
AMP.P2 28 C	AMP.P6 3" C				
AMP.P2 30 C	AMP.P6 100 C				
AMP.P3 30 C	AMP.P6 3 1/2" C				
AMP.P3 32 C	6	AMP.P6 108 C			
AMP.P3 1" C	AMP.P6 4" C				
3	AMP.P3 35 C	AMP.P6 4 1/2" C			
AMP.P3 38 C	AMP.P6 133 C				
AMP.P3 40 C					
AMP.P3 1 1/4" C					

APINP



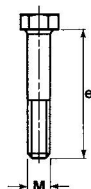
DIN gruppo group	piastra inferiore lower plate				
	APINP	a mm	F mm	c mm	S mm
1	APINP1	30	77	33	8
2	APINP2	30	87	45	8
3	APINP3	30	103	60	8
4	APINP4	45	140	90	10
5	APINP5	60	180	122	10
6	APINP6	80	225	168	15
7	APINP7	90	270	205	15
8	APINP8	120	340	265	25

APSP



DIN gruppo group	piastra superiore upper plate				
	APSP	a mm	F mm	c mm	S mm
1	APSP1	30	55	33	8
2	APSP2	30	70	45	8
3	APSP3	30	85	60	8
4	APSP4	45	120	90	10
5	APSP5	60	152	122	10
6	APSP6	80	205	168	15
7	APSP7	90	250	205	15
8	APSP8	120	320	265	25

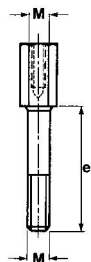
AVTEP



DIN gruppo
group vite a testa esagonale
hexagonal head screw

	AVTEP	M	e mm
1	AVTEP1	M10	45
2	AVTEP2	M10	60
3	AVTEP3	M10	70
4	AVTEP4	M12	100
5	AVTEP5	M16	130
6	AVTEP6	M20	190
7	AVTEP7	M24	220
8	AVTEP8	M30	300

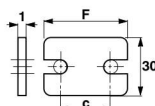
AVTEAP



DIN gruppo
group vite a testa esagonale
hexagonal head screw

	AVTEAP	M	e mm
1	AVTEAP1	M10	26
2	AVTEAP2	M10	41
3	AVTEAP3	M10	52
4	AVTEAP4	M12	83
5	AVTEAP5	M16	110

APMRSP

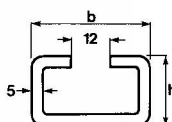


DIN gruppo
group

piastra superiore di sicurezza
security upper plate

	APMRSP	a mm	F mm	c mm	S mm
1	APMRSP1	30	55	33	8
2	APMRSP2	30	70	45	8
3	APMRSP3	30	85	60	8
4	APMRSP4	45	120	90	10
5	APMRSP5	60	152	122	10

ABINP

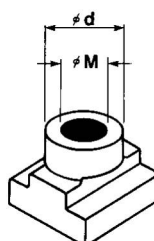


DIN gruppo
group

binari portanti
spessore 5 mm rail

	ABINP	b mm	h mm
1	ABINP1	40	22

ADESP



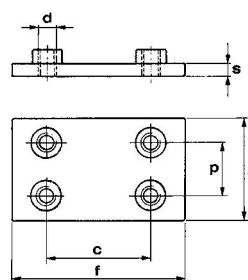
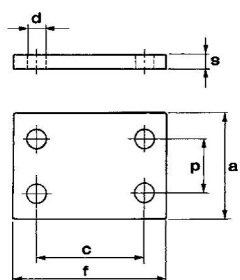
DIN gruppo
group

dado fissaggio binari
rail nut

	ADESP	M	\varnothing mm
1	ADESP1	M10	18
2	ADESP2	M12	20

Piastre doppie per serie pesante

Double plates for heavy duty series



piastra superiore pesante doppia
heavy duty double upper plate

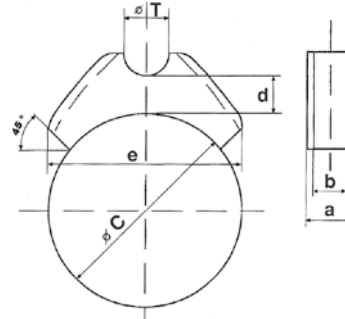
DIN gruppo group	APSPD	a mm	f mm	s mm	c mm	p mm	d mm
1	APSPD1	60	55	8	33	31	11
2	APSPD2	60	70	8	45	31	11
3	APSPD3	60	85	8	60	31	11
4	APSPD4	90	120	10	90	46	14
5	APSPD5	120	154	10	122	61	18

piastra inferiore pesante doppia
heavy duty double lower plate

DIN gruppo group	APINPD	a mm	f mm	s mm	c mm	p mm	m
1	APINPD1	60	77	8	33	31	M10
2	APINPD2	60	87	8	45	31	M10
3	APINPD3	60	103	8	60	31	M10
4	APINPD4	90	140	10	90	46	M12
5	APINPD5	120	180	10	122	61	M16

Supporto tra tubo e cilindro

Double plates for heavy duty series



DIN gruppo group	codice code	tipo di collare clamp type		Ø tubo T Ø tube T		dimensioni in mm dimension in mm			
		mm	inc. O.D.	mm	inc. O.D.	a	b	c	d
1	STF 12/50-70	50 ÷ 70	1,96 ÷ 2,75	12	0,47	23	14	12	72
	STF 12/60-80	60 ÷ 80	2,36 ÷ 3,15						
	STF 12/70-90	70 ÷ 90	2,75 ÷ 3,54						
	STF 12/80-100	80 ÷ 100	3,15 ÷ 3,94						
	STF 12/90-110	90 ÷ 110	3,54 ÷ 4,33						
	STF 12/100-120	100 ÷ 120	3,94 ÷ 4,72						
	STF 12/110-130	110 ÷ 130	4,33 ÷ 5,12						
	STF 12/125-150	125 ÷ 150	4,92 ÷ 5,90						
	STF 12/145-170	145 ÷ 170	5,71 ÷ 6,69						
	STF 12/165-200	165 ÷ 200	6,49 ÷ 7,87						
2	STF 20/50-70	50 ÷ 70	1,96 ÷ 2,75	20	0,78	23	14	12	72
	STF 20/60-80	60 ÷ 80	2,36 ÷ 3,15						
	STF 20/70-90	70 ÷ 90	2,75 ÷ 3,54						
	STF 20/80-100	80 ÷ 100	3,15 ÷ 3,94						
	STF 20/90-110	90 ÷ 110	3,54 ÷ 4,33						
	STF 20/100-120	100 ÷ 120	3,94 ÷ 4,72						
	STF 20/110-130	110 ÷ 130	4,33 ÷ 5,12						
	STF 20/125-150	125 ÷ 150	4,92 ÷ 5,90						
	STF 20/145-170	145 ÷ 170	5,71 ÷ 6,69						
	STF 20/165-200	165 ÷ 200	6,49 ÷ 7,87						
3	STF 25/50-70	50 ÷ 70	1,96 ÷ 2,75	25	0,98	23	14	12	72
	STF 25/60-80	60 ÷ 80	2,36 ÷ 3,15						
	STF 25/70-90	70 ÷ 90	2,75 ÷ 3,54						
	STF 25/80-100	80 ÷ 100	3,15 ÷ 3,94						
	STF 25/90-110	90 ÷ 110	3,54 ÷ 4,33						
	STF 25/100-120	100 ÷ 120	3,94 ÷ 4,72						
	STF 25/110-130	110 ÷ 130	4,33 ÷ 5,12						
	STF 25/125-150	125 ÷ 150	4,92 ÷ 5,90						
	STF 25/145-170	145 ÷ 170	5,71 ÷ 6,69						
	STF 25/165-200	165 ÷ 200	6,49 ÷ 7,87						

Applicazioni: Oleodinamica e pneumatica - Macchine utensili - Macchine movimento terra - Macchine agricole - Industria meccanica - Industria in generale - ecc.

Applications: oleodynamic and pneumatic - Machines tools - Earth-moving machines - Farmmachines - Mechanical and metallurgical industry - Oil industry - and so on.