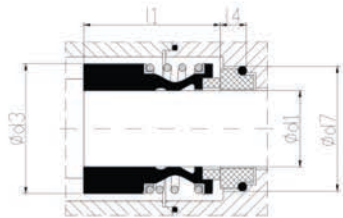


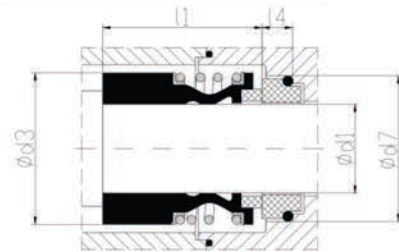
Торцевые уплотнения для насосов GRUNDFOS

NM LT



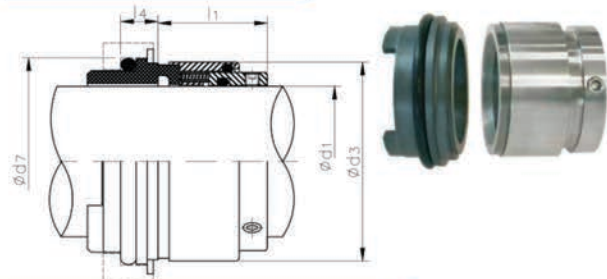
d ₁	d ₃	d ₇	l ₁	l ₄
12	24	23	25,9	15,0
16	28	27	28,4	12,3
22	36	37	30,0	11,1
33	51	48	35,0	7,5

NM-12 / NM-13



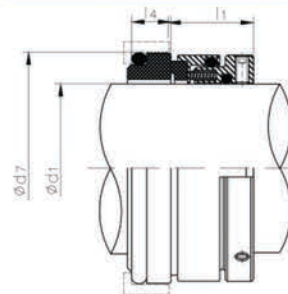
d ₁	d ₃	d ₇	l ₁	l ₄
28	47	43	42,5	7,5
38	58	56	46,0	9,0
45	65	63	36,0	9,0
55	78	75	59,0	12,0
65	90	85	69,0	14,5

BV-2/SRL



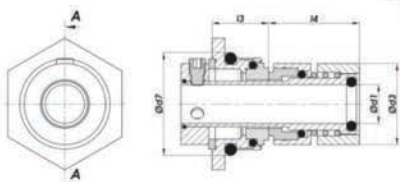
d ₁	d ₃	d ₇	l ₁	l ₄
25	39	38	29,9	9,6
32	46	48	32,4	11
38	54	55	33,9	11,2
50	66	69,3	34,4	14
65	85	85,4	38,9	15,3
95	114,9	120	62,8	17,2
110	131,5	140,3	70	16,5
120	141,3	150,3	36,5	20

BV-4/SRL



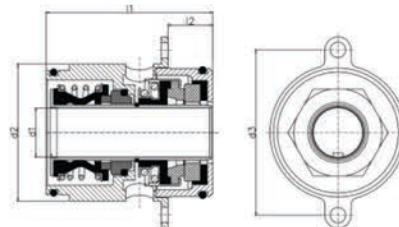
d ₁	d ₃	d ₇	l ₁	l ₄
30	46	45	24	10
38	58	56	27	11
50	70	70	27	13
65	90	85	32	13

GR2



d ₁	d ₂	d ₃	l ₃	l ₄
12	25,2	29	19,5	32,0
16	29,7	34	20,5	32,0
22	43	50	26	37,0

NM-GSE



d ₁	d ₂	d ₃	l ₁	l ₂
22	61,6	74	63,3	12,3
32	74	88	69,5	9,5